



## HEIDEN HCF M54-- WALLBOARD FORK OPERATING MANUAL



**HEIDEN LLC** 4624 Expo Drive, Manitowoc, WI 54220  
www.heidencrane.com . Phone: 888-682-5779 . Fax: 920-682-3174

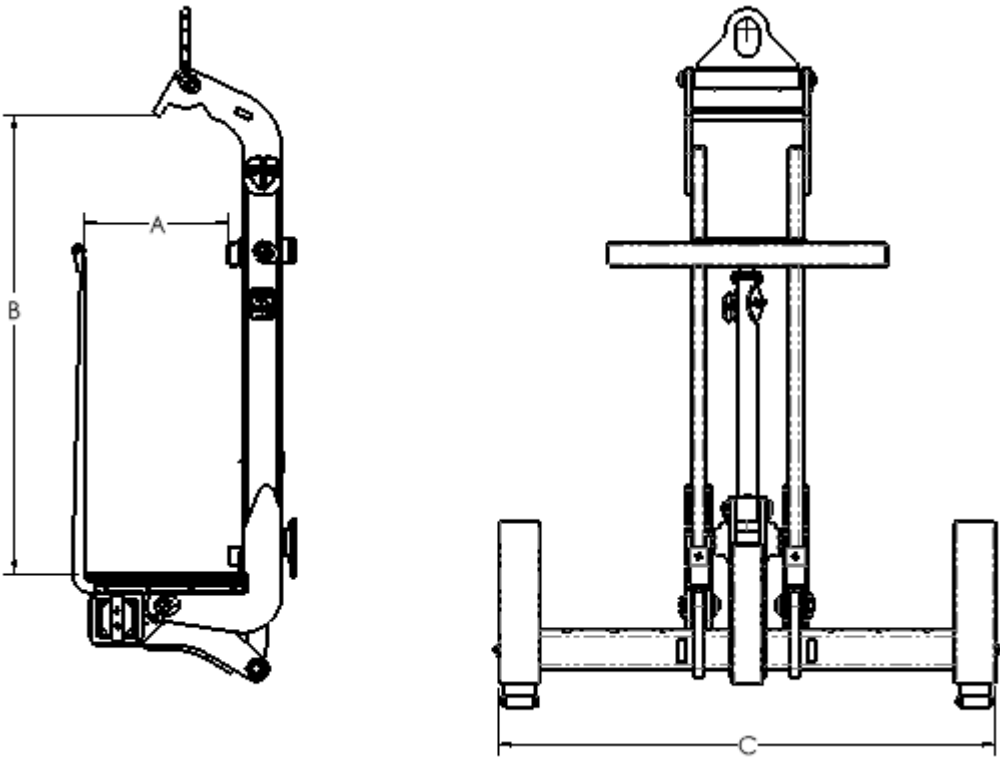


# Table of Contents

- 1. Identification ..... 3**
  - Model numbers
  - I.D. plate
- 2. General information ..... 5**
  - Prohibited methods of operation
  - Attachment installation note
  - Warranty
- 3. Conditions of use ..... 7**
  - Operating conditions
  - Operating the unit
  - Transporting the unit
- 4. Assembly instructions ..... 11**
  - Parts breakdown
- 5. Maintenance and repairs ..... 15**
  - Maintenance information
  - Fluids and lubricants
  - Maintenance intervals
  - Repairs
- 6. Troubleshooting ..... 17**

1. Identifying unit model number

1.1



MODEL NUMBER

MODEL	CAPACITY LBS	TINE POSITIONING "C"	AREA OF PAYLOAD "A X B"
HCF5463	6,000*	UP TO 63"	18.75" X 57.75"
HCF5472	6,000*	UP TO 72"	18.75" X 57.75"
HCF5484	6,000*	UP TO 84"	18.75" X 57.75"

\*includes weight of fork



## 1.2 Identification Plate

Locate identification plate on upper side of main frame to find model number and serial number needed when contacting for questions or replacement parts for your wallboard fork.

## 2. General information

These instructions apply to load bearing devices in lifting areas and affects products made by Heiden LLC. USA.

The statutory safety and accident prevention regulations apply to load bearing devices. Special mounting information, bearing capacities, permitted operating pressure and maintenance information along with lists are provided in this manual.

### 2.1 Prohibited methods of operation:



#### **Warning!**

Designates a possible dangerous situation.

Instructions must be observed and followed.

Disregarding this information may result in serious injury.

**Disregarding the operating instructions may result in accidents, downtime and may void warranty.**

- Equipment must be used in accordance with all regulations. See OSHA [ Occupational Safety and Health Administration] 1926.1400(c)(17)(i)
- All equipment is generally designed for use near the ground (up to a lifting height of 6').
- It is prohibited to control the equipment by hand. (except when adjusting tine width)
- It is prohibited to conduct the equipment above people.
- It is prohibited to transport a person with any attachment!
- Using the crane fork without securing the load is generally prohibited.
- **Observe the operating instructions!**

#### **General information:**

Users must refer to the operating instructions to familiarize themselves with the machine before operating it.

The operating instructions are meant for the users. Please refer to the corresponding documents for descriptions and maintenance for other machine components and the base machine.



## 2.2 Warranty

**HEIDEN** warrants each new product, made by **HEIDEN**, to be free from defects in materials and workmanship. Its obligation and liability under this warranty being Expressly limited to repairing or, at **HEIDEN's** option, replacing free of charge at its factory any part proving defective under normal use and service for a period of 12 months from the day of delivery to the customer. Parts claimed to be, if defective and for which repair or replacement is desired, shall be, if requested by **HEIDEN**, returned transportation prepaid to **HEIDEN's** factory for inspection. **HEIDEN** will cover 60% of reasonable and agreed upon labor for the repair. \*Note: electrical components are subject to 30 day warranty only.

Any operation beyond rated capacity or the improper use or application of the crane attachment or the substitution upon it of parts not approved by **HEIDEN** or any alteration or repair by others in such manner as, in **HEIDEN's** judgement, to the affect the product materially and adversely shall void this warranty. No representative of **HEIDEN** at any time shall change or extend this warranty in any way. This warranty covers only new and unused products by **HEIDEN**. Products manufactured by others are covered only by such warranties as are extended to **HEIDEN** by its suppliers.

## 2.3 Warranty Disclaimer

*THIS WARRANTY IS IN LIEU OF ALL OTHER WARRANTIES EXPRESS OR IMPLIED INCLUDING BUT NOT LIMITED TO WARRANTIES OF MERCHANTABILITY AND FITNESS FOR ANY PARTICULAR PURPOSE, AND THE OBLIGATION AND LIABILITY OF MANUFACTURER UNDER THIS WARRANTY SHALL NOT INCLUDE ANY TRANSPORTATION OR OTHER CHARGES OR ANY LIABILITY FOR DIRECT, INDIRECT OR CONSEQUENTIAL DAMAGES OR DELAY RESULTING FROM THE DEFECT.*

## 3. Conditions of use

### 3.1 Operating conditions

The attachment is intended for use on truck mounted crane.

The attachment is designed for its intended purpose.

When a load is suspended in mid-air, it must be sufficiently secured (chain or trellis).

All other applications used with this attachment will be at the owner's full risk.

Please check with your dealer for special attachments for other uses.

The usual environmental conditions for construction machinery apply.

Ambient temperature range: -15° C to 40° C.

#### **Warning!**

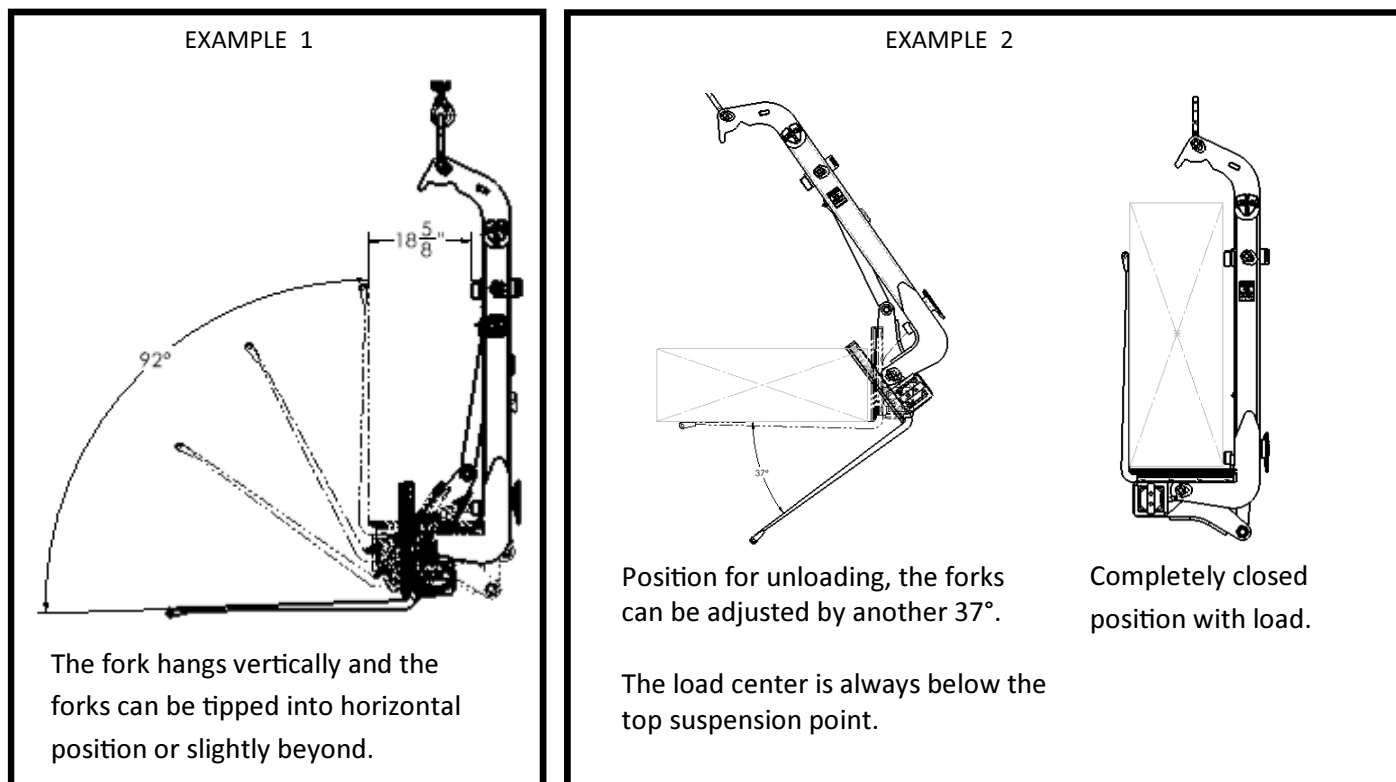


**Using it any other way is not suitable.**

**Operating authority is liable for any danger or damages resulting in the misuse of this equipment.**

### 3.2 Operating the unit

A: There are two positions for the wallboard fork in suspended state (see examples 1 and 2).



B: For loading, open the fork tines to the horizontal position.

Make sure the tines are centered under the load (see Example 3).

The plastic fork pads must closely fit the back of the load to avoid damage to the load (see Example 4).

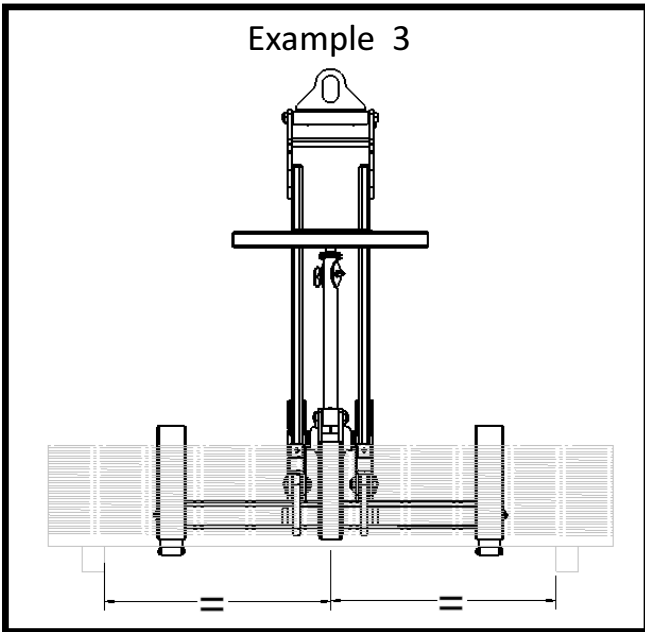
Before lifting, shift the top pivot point to above the load center (wallboard fork could otherwise lose load), (see Example 5).

A tilted load must not unilaterally weigh down the fork tines when lifting (see Example 6).

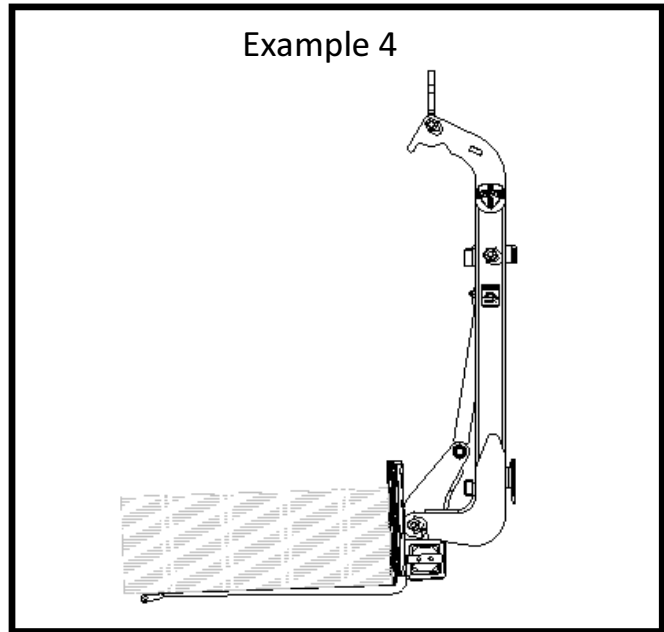
Close the wallboard fork completely.



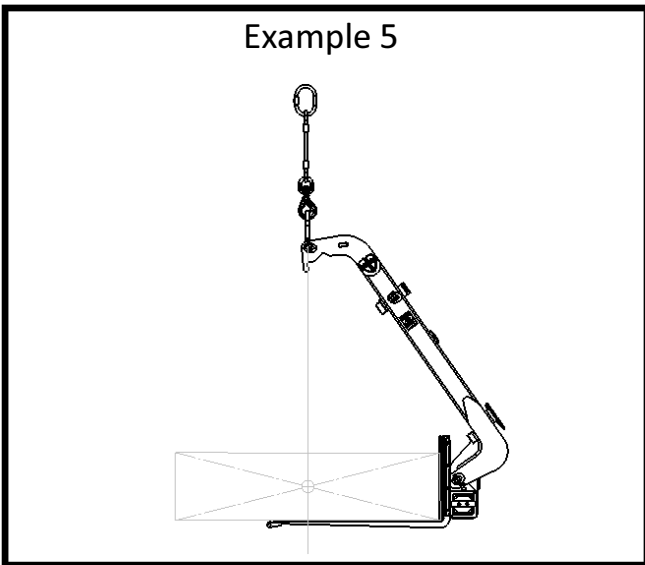
Example 3



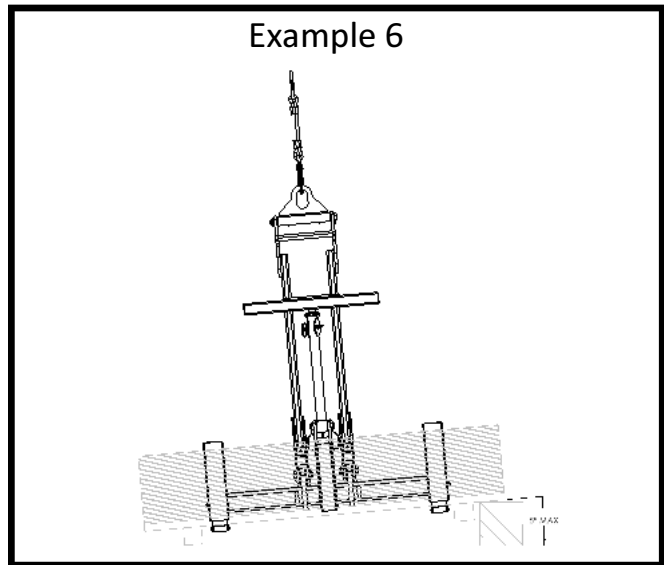
Example 4



Example 5



Example 6



### General Operating Instructions:

- Attach hook to crane and raise so slack is taken out of the fork head assembly.
- With the fork resting on the ground in the CLOSED position, the rigger removes safety clip and locking pin from link assembly. Back away from the fork a safe distance as the crane operator raises the fork, the fork will open as it is lifted.
- Guide the fork into palletized load
- Once in load, the crane operator lowers the fork and with a gentle push on the back of the fork from the rigger the fork will fold over the load. **Warning:** keep hands and feet away from moving parts.

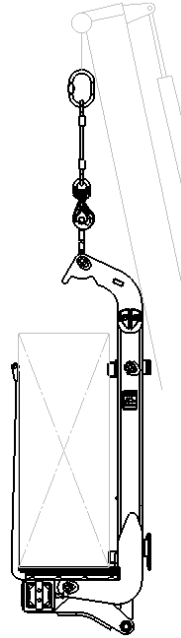
- Rigger then inserts locking pin and safety clip.
- Rigger backs away a safe distance from load before it is lifted.

**Warning!**

Never unhook the fork from the crane in the open position serious injury or death may occur.

**Warning!**

Never remove locking pin from link assembly unless fork is attached to crane.

**Operating safety notes**

All persons using the equipment should be familiar with the operation of the wallboard fork before commissioning the machine.



**It is prohibited to wield the equipment by hand. Danger of injury!**

The operator is legally obliged by government regulations for the prevention of accidents to have an expert inspect the equipment for cracks, wear, corrosion and functional safety at least once a year or more, depending on operating conditions.



Observe the permitted total weight when loading vehicles and trailers (vehicle documentation).

### 3.3 Transporting the unit

During transport the wallboard fork must be placed on the vehicle or trailer and secured in such a manner to minimize excessive movement.

## 4.2 Link replacement

### 4.2.1 Removal

Set the fork down on suitable level ground.

Open the fork completely and secure the fork to prevent it from closing.

Loosen and remove nuts (#1).

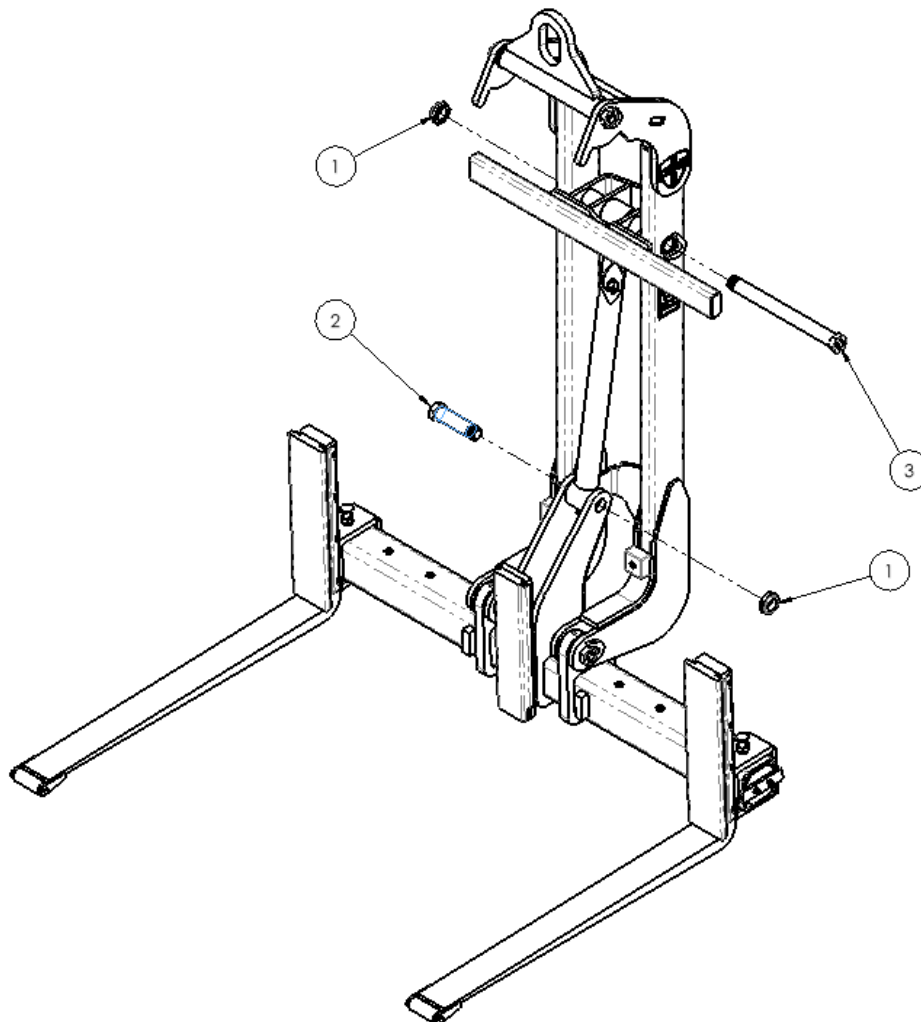
Remove lower pin(#2).

Swing link free from tube assembly and remove upper pin (#3) to remove link

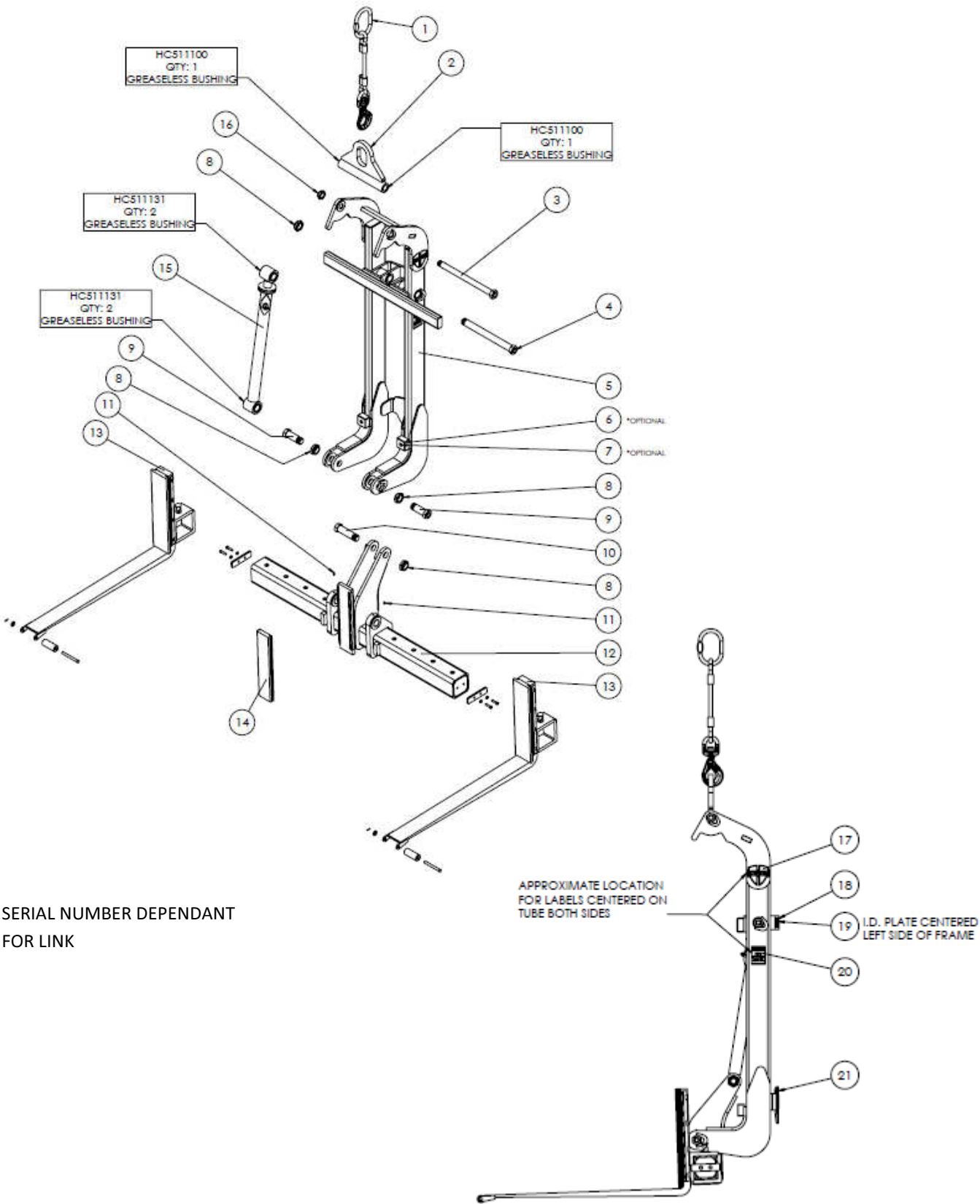
### 4.2.2 Installation

To install the link, proceed in reverse order.

Lubricate the bearings.



4.3 Parts Breakdown



SERIAL NUMBER DEPENDANT  
FOR LINK

SERIAL NUMBER: \_\_\_\_\_

## 5. Maintenance and Repairs

### 5.1 General Notes

Thorough regular maintenance is essential for prolonged life of the wallboard fork as well as limiting down time due to repairs.

Strict cleanliness must be observed in all maintenance operations including collection and proper disposal of fluids.

Before disconnecting hydraulic connections, thoroughly clean the area surrounding the connections to reduce the risk of contaminating fluids.

Clean grease zerks before greasing.

Maintenance intervals must be reduced if the equipment is being operated under severe conditions (e.g. on a building site with excessive dust)

### 5.2 Disposing of used oil and grease

Most countries have strict regulations for disposing of used oils without harming the environment.

#### **Hydraulic fluid**

Disposal in approved containers.

Do not mix with used engine oil.

The approved fluids are free of PCB (polychlorinated biphenylene) and halogens.

## 5.4 Maintenance Intervals

Maintenance Operation	Every 50 Operating Hours	Yearly
Clean and lubricate grease zerks	<b>X</b>	
Check screw connections, tighten if necessary	<b>X</b>	
Check for cracks, wear, corrosion and functional safety (to be carried out by qualified personnel)		<b>X</b>

## 5.5 Repairs

If the equipment is found to be faulty, it must be repaired without delay or suitable measures must be taken to comply with all safety regulations.

Any welding on the unit is generally prohibited unless performed by a qualified individual and is performed per industry standards and do not compromise the integrity of the unit. Welding repairs may void warranty and is at the discretion of the Heiden LLC. It is advised to contact Heiden LLC before performing such repairs.



\*Heiden LLC reserves the right to change these specifications without notice and without incurring any obligation relating to such changes.

